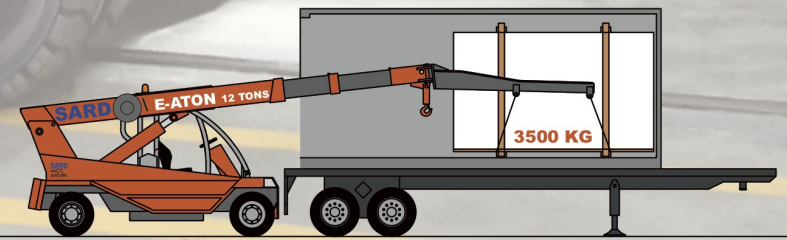
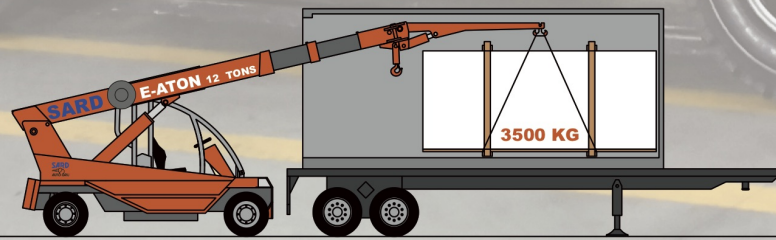


THE BEST OF **MADE IN ITALY**

MEMBER **MIA** + **BSi**
THE NATURAL STONE INSTITUTE



SARD
AUTO GRU



[f SARD.CRANE](#) [i SARDCRANE](#) [WWW WWW.SARD.IT](#) [@ info@sard.it - sardcrane@gmail.com](#)

E-ATON - 12.000 kg

SARD SRL - Via Celia, 24 - 54100 Massa - Italy
Tel. +39 0585 858644 - sardcrane@gmail.com

Technical Data

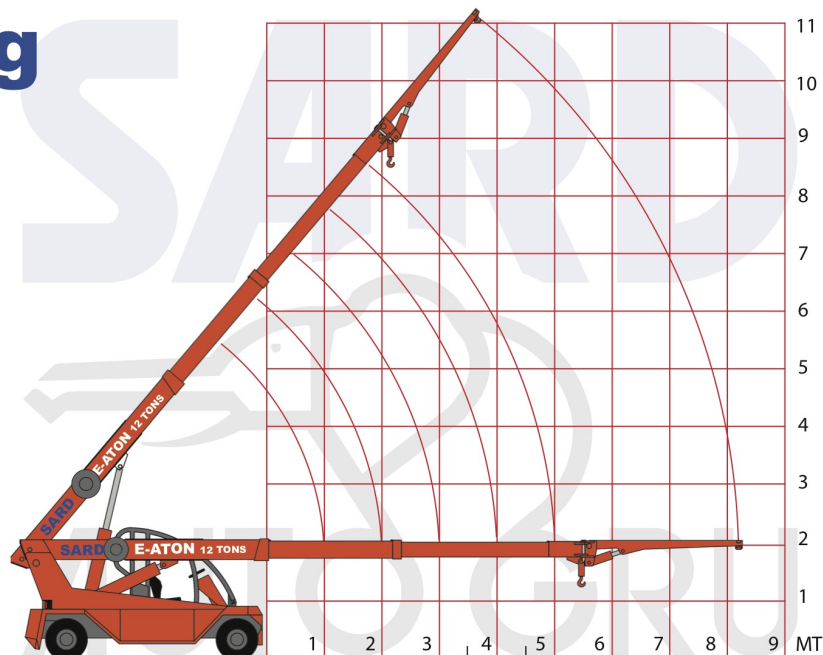
Battery 640ah/80v
Electronic station with energy recovery AC
Traction engine AC 20 Kw - Pump engine AC 16,5 Kw
Steering engine DC 2 Kw
Electronic antioverturning system
Drive axle Clark - Hurth
Hydraulic steering
ROLL-BAR for complete protection of the operator
Pins of steel 39NiCrMo3 (1.000 N/mm2)
Tyres 250-15

Caratteristiche Tecniche

Batteria 80V - 640Ah
Centralina trazione e pompa in AC
Motore trazione AC 20 Kw- elettropompa sollevamento AC 16,5 Kw
Motore elettropompa idroguida DC 2 Kw
Assale anteriore Hurth trainante con dischi freno a bagno d'olio
Impianto frenante servo-assistito
Antiribaltamento elettronico
Roll-bar a protezione gruista
Perni in acciaio ad alta resistenza 39NiCrMo3 (ca 1.000 N/mm2)
Gomme 250-15

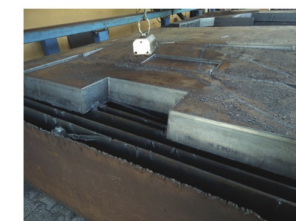
Optional:

Cabina / Cabin
Prolunga idraulica / Hydraulic extension
Prolunga meccanica / Mechanical Extension
Forca per pastelli / Fork for bundles
Forca per pallet / Fork for pallet
Altri a richiesta / Others at request



daN	12.000	8.000	5.000	3.800	3.200	2.500			
HOOK MAX LOAD - PORTATA CON GANCIO PRINCIPALE									
	1	2	3	4	5	6	7	8	9 MT

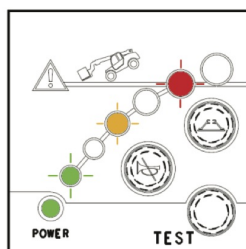
daN				3.500	3.500	3.150	2.450	2.100	1.650
JIB/FORK MAX LOAD - PORTATA CON PROLUNGA O FORCA									
	1	2	3	4	5	6	7	8	9 MT



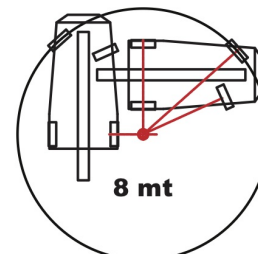
FOR SHIPMENT - CONTAINER BOX 20'



Antioverload system



Steering radius less than 4mt



Height 2260 mm

