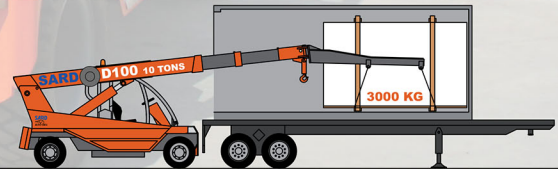
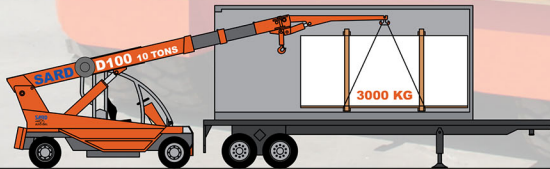




THE BEST OF
MADE IN ITALY

MEMBER
MIA + **BSI**
THE NATURAL STONE INSTITUTE

SARD
AUTO GRU



D100 - 10.000 kg

SARD SRL - Via Celia, 24 - 54100 Massa - Italy
Tel. +39 0585 858644

Technical Data

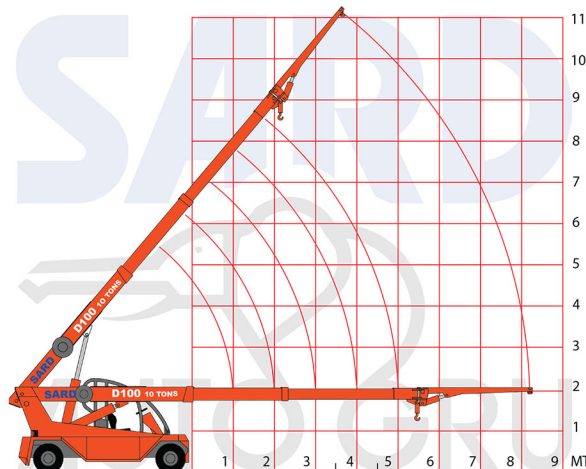
Diesel engine water cooled 4 cylinders turbo - 61 kw / 310 Nm
Automatic gear 2 speeds
Drive axle Clark - Hurth
Hydraulic steering
ROLL-BAR for complete protection of the operator
Pins of steel 39NiCrMo3 (1.000 N/mm²)
Tyres 250-15
Electronic antioverload
Additional light of depth

Caratteristiche Tecniche

Motore Diesel turbo, raffreddato ad acqua - 61 kw / 310 Nm
Cambio automatico a due velocità
Assale anteriore con freni a bagno d'olio
Sterzo idraulico
Roll-Bar a protezione dell'operatore
Perni in 39NiCrMo3 (1.000 N/mm²)
Gomme 250-15
Antiribaltamento elettronico
Fanal di profondità

Optional:

Cabina / Cabin
Prolunga idraulica / Hydraulic extension
Prolunga meccanica / Mechanical Extension
Forca per pastelli / Fork for bundles
Forca per pallet / Fork for pallet
Altri a richiesta / Others at request

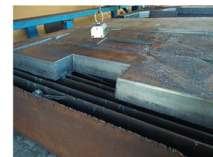


daN	1	2	3	4	5	6	7	8	9 MT
10,000									
6,800									
4,400									
3,300									
2,500									
2,000									

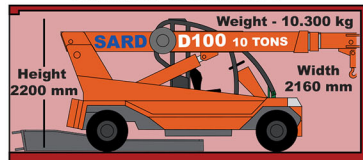
HOOK MAX LOAD - PORTATA CON GANCIO PRINCIPALE

daN	1	2	3	4	5	6	7	8	9 MT
3,500									
3,000									
2,800									
1,900									
1,500									
1,200									

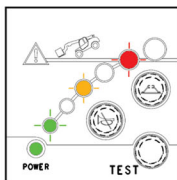
JIB/FORK MAX LOAD - PORTATA CON PROLUNGA O FORCA



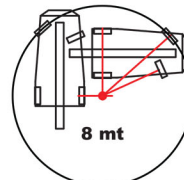
FOR SHIPMENT - CONTAINER BOX 20'



Antioverload system



Steering radius less than 4mt



Height
2260 mm

