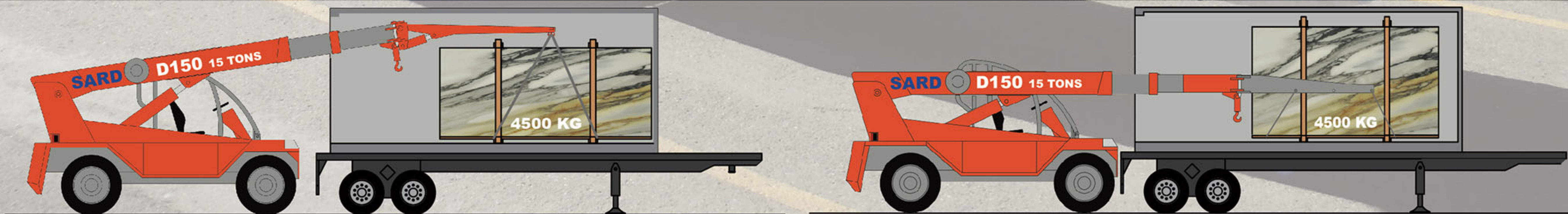




SARD
AUTOGRU



D150 - 15.000 kg

SARD SRL - Via Celia, 24 - 54100 Massa - Italy
Tel. +39 0585 858644

Technical Data

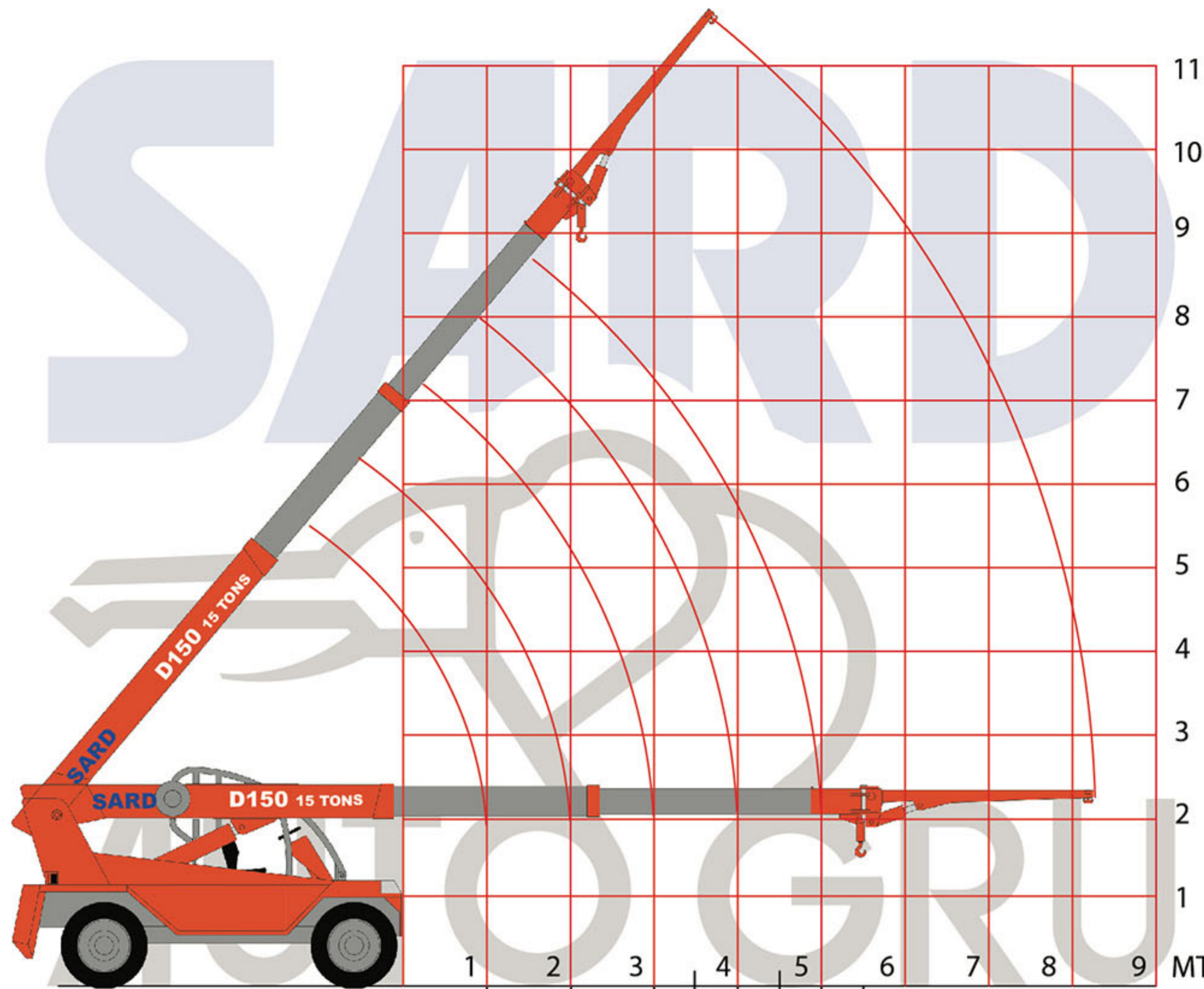
Diesel engine water cooled 4 cylinders turbo - 61 kw / 310 Nm
Automatic gear 2 speeds
Drive axle Clark - Hurth
Hydraulic steering
ROLL-BAR for complete protection of the operator
Pins of steel 39NiCrMo3 (1.000 N/mm²)
Tyres 10.00-20 HD
Electronic antioverload
Additional light of depth

Caratteristiche Tecniche

Motore Diesel turbo, raffreddato ad acqua - 61 kw / 310 Nm
Cambio automatico a due velocità
Assale anteriore con freni a bagno d'olio
Sterzo idraulico
Roll-Bar a protezione dell'operatore
Perni in 39NiCrMo3 (1.000 N/mm²)
Gomme 10.00-20 HD
Antiribaltamento elettronico
Fanali di profondità

Optional:

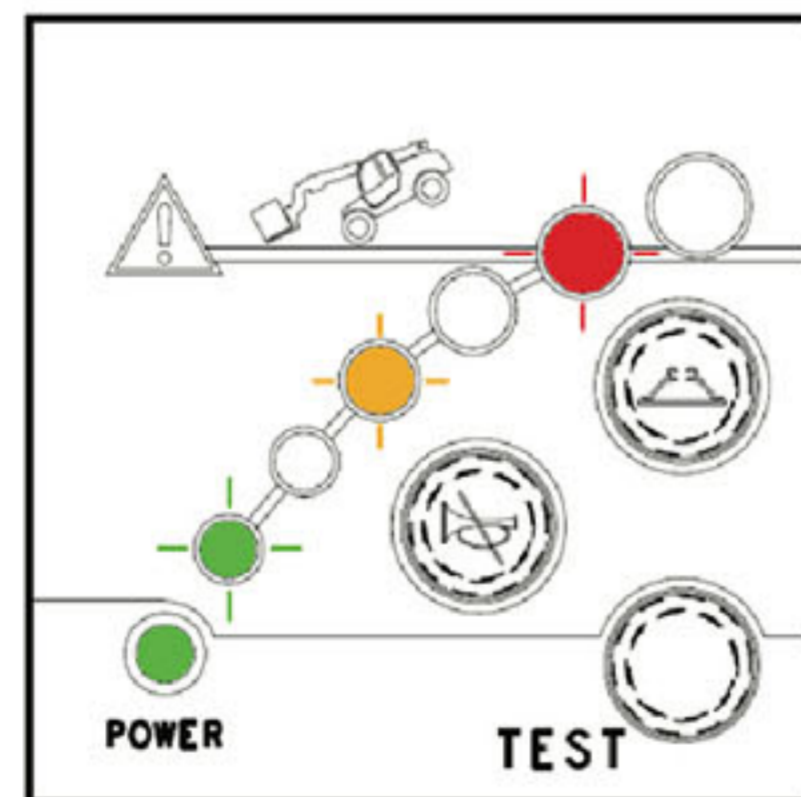
Cabina / Cabin
Prolunga idraulica / Hydraulic extension
Prolunga meccanica / Mechanical Extension
Forca per pastelli / Fork for bundles
Forca per pallet / Fork for pallet
Altri a richiesta / Others at request



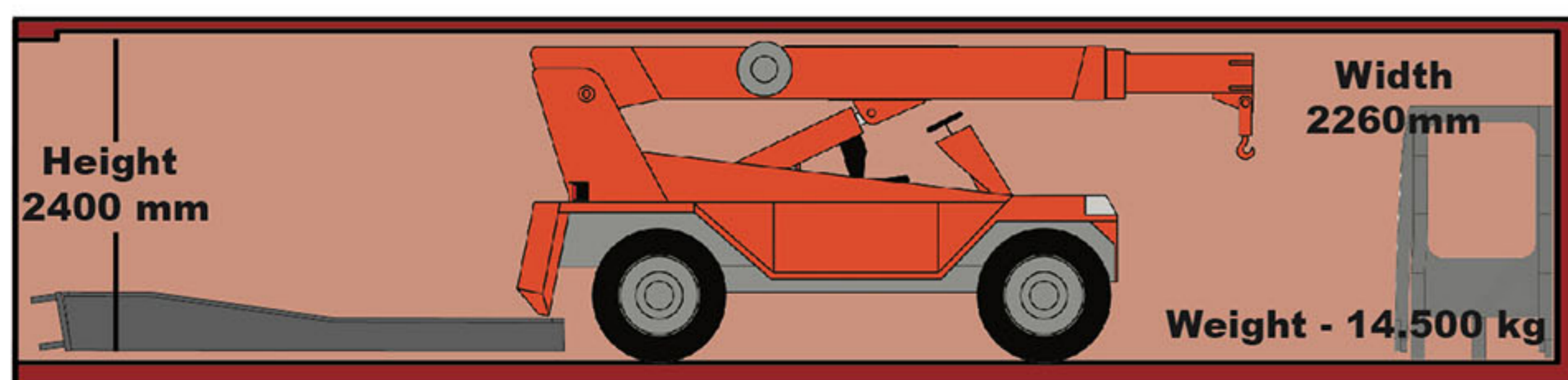
daN	15.000	9.600	6.800	5.000	3.500	3.300			
HOOK MAX LOAD - PORTATA CON GANCIO PRINCIPALE									
	1	2	3	4	5	6	7	8	9 MT
daN				4.500	4.500	3.500	3.000	2.500	1.800
JIB/FORK MAX LOAD - PORTATA CON PROLUNGA O FORCA									



Antioverload system



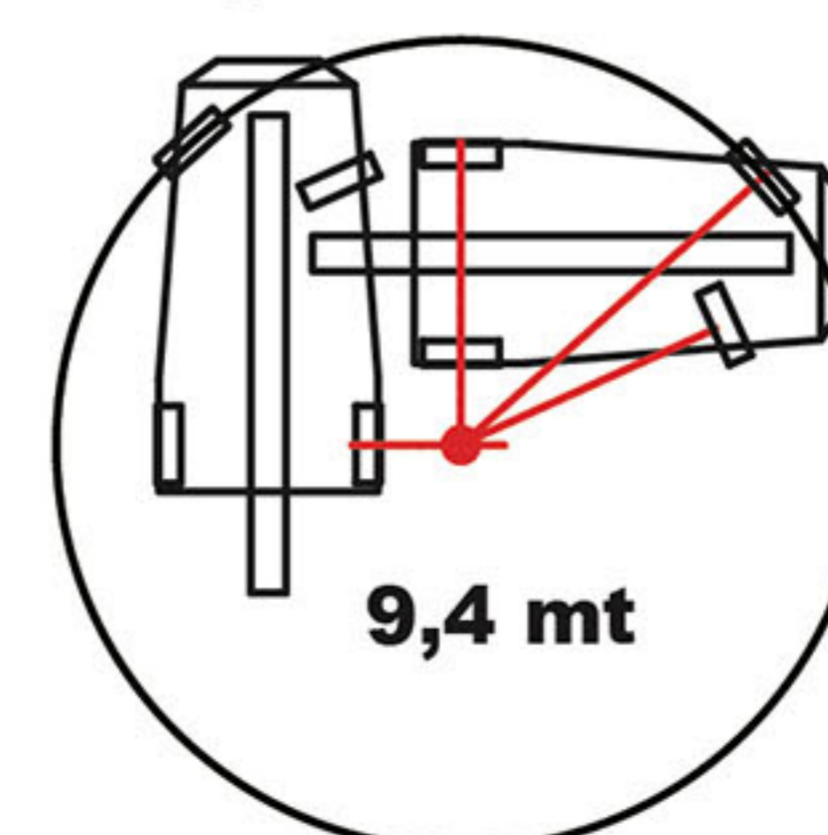
FOR SHIPMENT - CONTAINER BOX 40' HIG CUBE



Length - 5700 mm



Steering radius less than 5mt



Height
2600 mm



Length - 5600 mm
Steering radius 4,580 mt