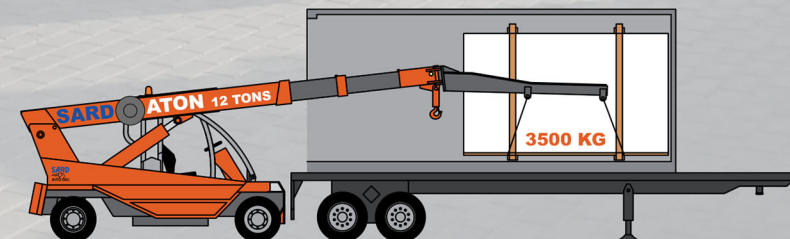
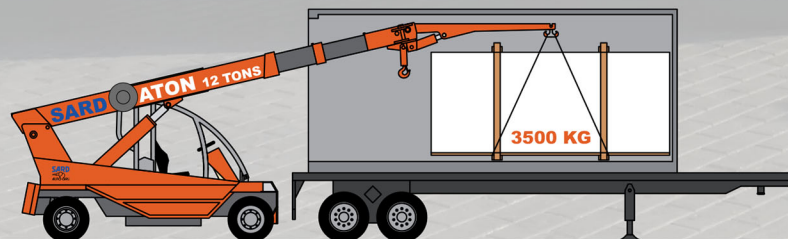


THE BEST OF **MADE IN ITALY**

MEMBER **MIA** + **BSI**
THE NATURAL STONE INSTITUTE



SARD
AUTO GRU



ATON - 12.000 kg

SARD SRL - Via Celia, 24 - 54100 Massa - Italy
Tel. +39 0585 858644

Technical Data

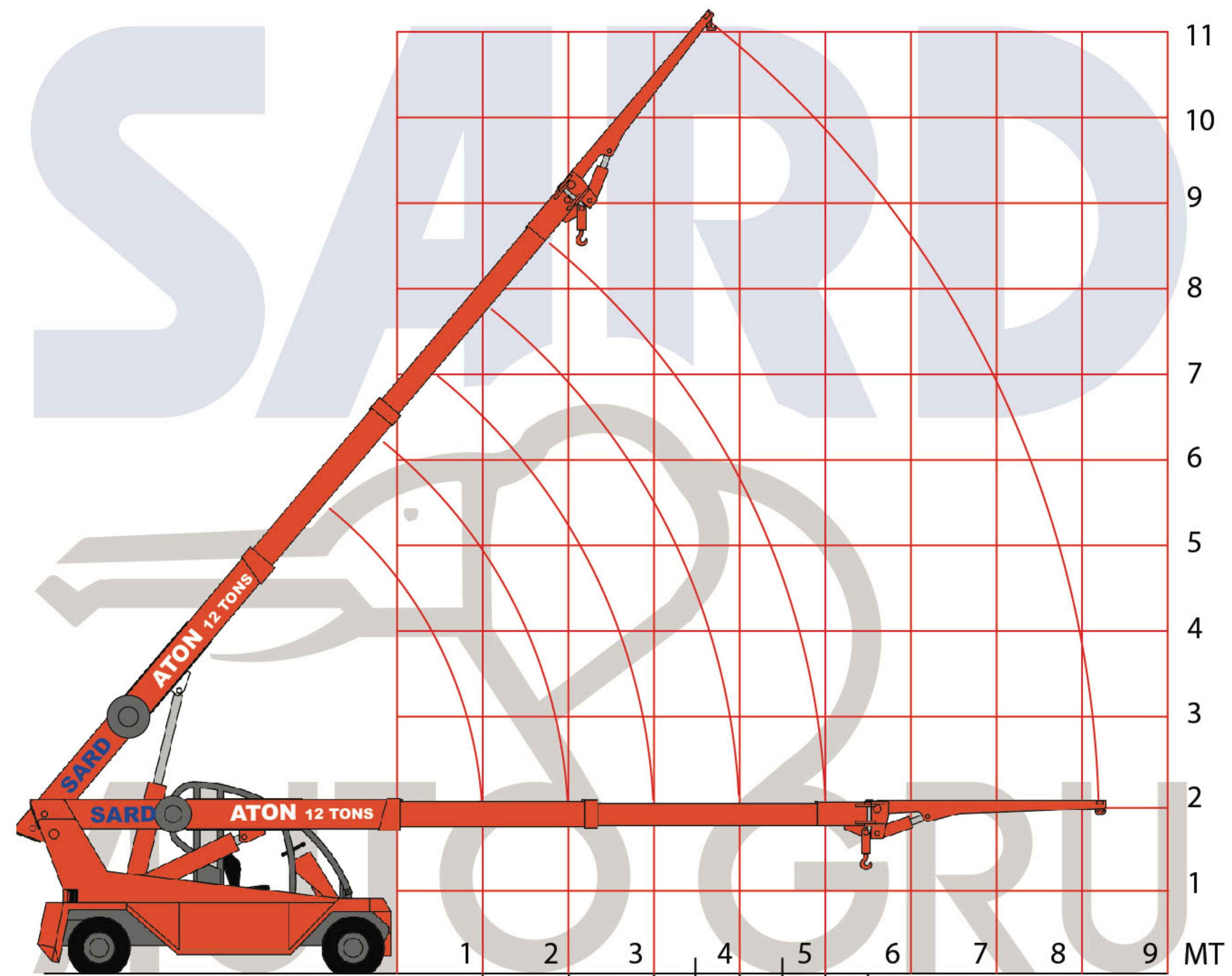
Diesel engine water cooled 4 cylinders turbo - 61 kw / 310 Nm
Automatic gear 2 speeds
Drive axle Clark - Hurth
Hydraulic steering
ROLL-BAR for complete protection of the operator
Pins of steel 39NiCrMo3 (1.000 N/mm²)
Tyres 250-15
Electronic antioverload
Additional light of depth

Caratteristiche Tecniche

Motore Diesel turbo, raffreddato ad acqua - 61 kw / 310 Nm
Cambio automatico a due velocità
Assale anteriore con freni a bagno d'olio
Sterzo idraulico
Roll-Bar a protezione dell'operatore
Perni in 39NiCrMo3 (1.000 N/mm²)
Gomme 250-15
Antiribaltamento elettronico
Fanali di profondità

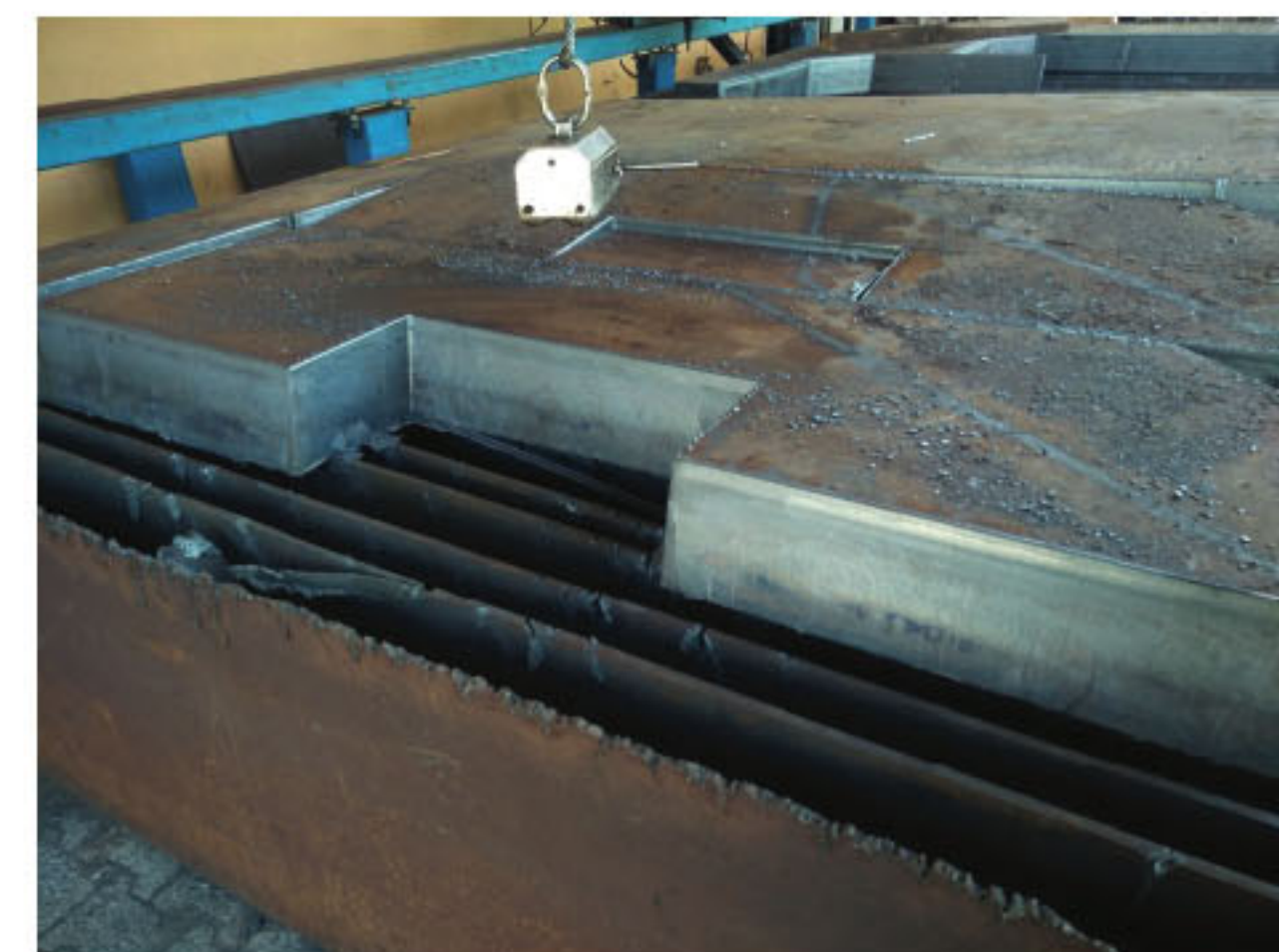
Optional:

Cabina / Cabin
Prolunga idraulica / Hydraulic extension
Prolunga meccanica / Mechanical Extension
Forca per pastelli / Fork for bundles
Forca per pallet / Fork for pallet
Altri a richiesta / Others at request

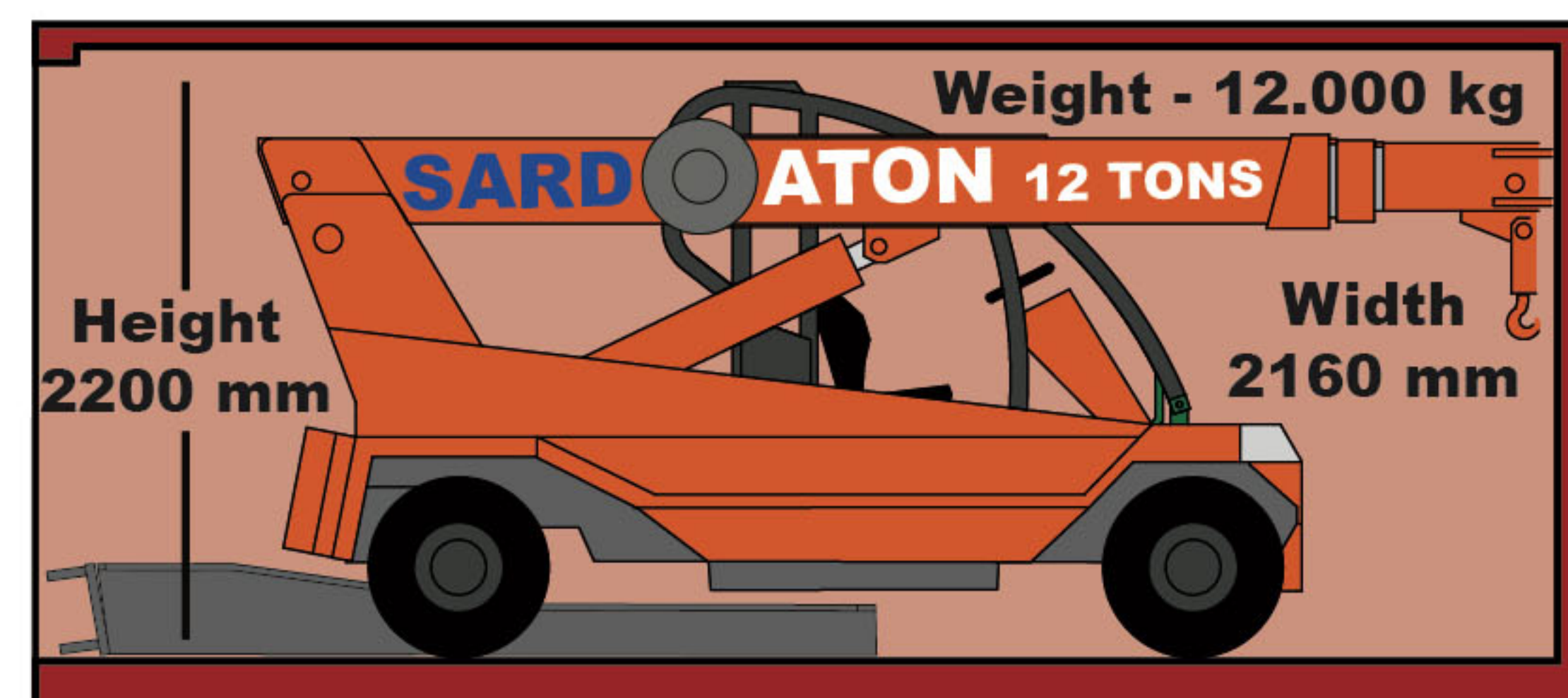


daN	12.000	8.000	5.000	3.800	3.200	2.500			
HOOK MAX LOAD - PORTATA CON GANCIO PRINCIPALE									
	1	2	3	4	5	6	7	8	9 MT

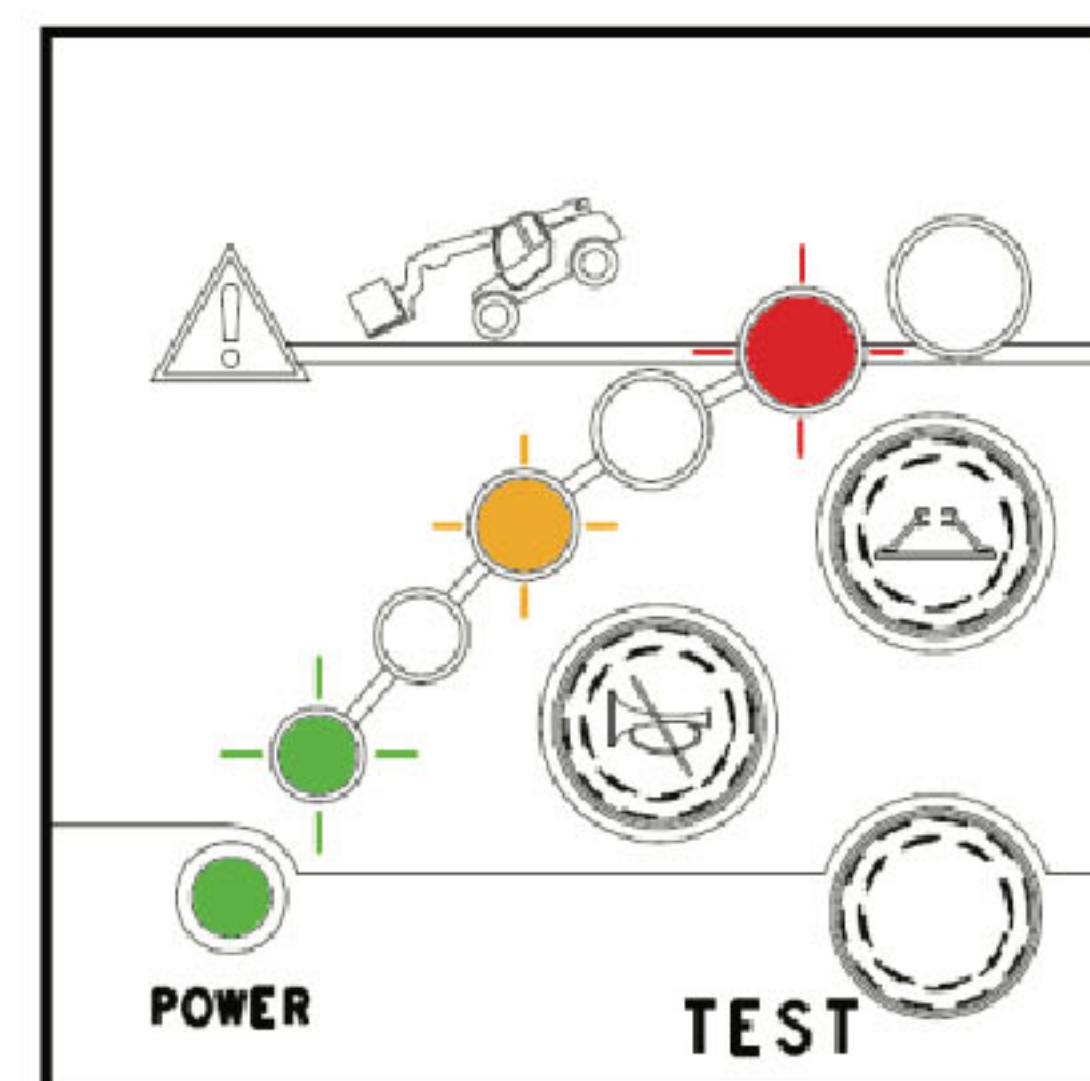
daN			3.500	3.500	3.150	2.450	2.100	1.650	
JIB/FORK MAX LOAD - PORTATA CON PROLUNGA O FORCA									
			3	4	5	6	7	8	9 MT



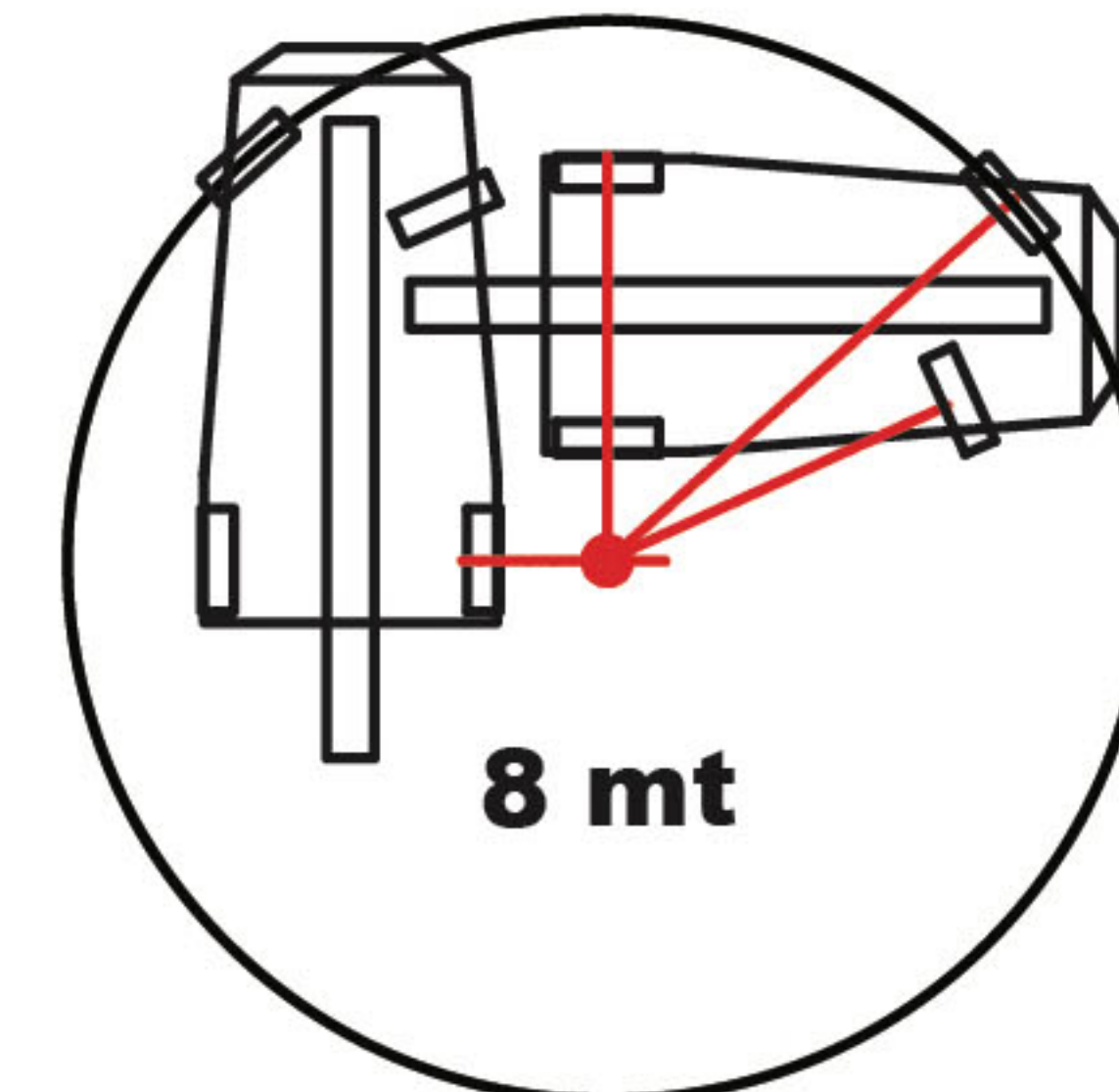
FOR SHIPMENT - CONTAINER BOX 20'



Antioverload system



Steering radius less than 4mt



Height
2260 mm



Length - 5100 mm
Steering radius less 4mt

